



# Bomba volumétrica monobloc de rotor helicoidal

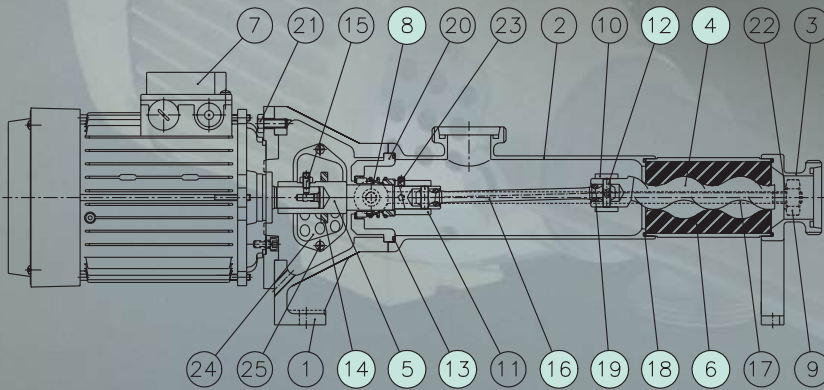
## Monobloc positive displacement spiral impeller pump

# ROTOR-M



Motor  
Motor

Motor-variador  
Variator-motor



### NOMENCLATURA

- |             |                     |                      |
|-------------|---------------------|----------------------|
| 1 - Brida   | 8 - Cierre mecánico | 15 - Prisionero      |
| 2 - Cuerpo  | 9 - Tuerca          | 16 - Barra universal |
| 3 - Boca    | 10 - Casquillo      | 17 - Tirante         |
| 4 - Rotor   | 11 - Casquillo      | 18 - Junta tórica    |
| 5 - Eje     | 12 - Pasador        | 19 - Junta barra     |
| 6 - Estator | 13 - Junta tórica   | 20 - Caja cierre     |
| 7 - Motor   | 14 - Paragotas      | 21 - Tornillo        |

### NOMENCLATURE

- |            |                        |                    |                |
|------------|------------------------|--------------------|----------------|
| 1 - Flange | 8 - Mechanical seal    | 15 - Setscrew      | 22 - Washer    |
| 2 - Body   | 9 - Nut                | 16 - Universal rod | 23 - Setscrew  |
| 3 - Mouth  | 10 - Sleeve            | 17 - Rod           | 24 - Protector |
| 4 - Rotor  | 11 - Sleeve            | 18 - O-ring        | 25 - Screw     |
| 5 - Shaft  | 12 - Pin               | 19 - Rod seal      |                |
| 6 - Stator | 13 - O-ring            | 20 - Seal box      |                |
| 7 - Motor  | 14 - Splash protection | 21 - Screw         |                |

NOTA: Las piezas de recambio recomendadas están coloreadas. / NOTE: The recommended spare parts are coloured in.

### CARACTERÍSTICAS TÉCNICAS

Caudal..... Q = 0.5 a 20 m<sup>3</sup>/h  
 Altura manométrica..... H = 5 a 60 mca  
 Motores..... P = 0.5 a 7.5 hp  
 (0.37 a 5.5 kW)  
 Velocidad motor..... n = 100 a 1500 rpm  
 Viscosidad máxima..... V = 100000 cP  
 Temperatura..... T = 80°C  
 (especial 110°C)  
 Material..... AISI-316L

### DESCRIPCIÓN

La bomba ROTOR-M es una bomba volumétrica de desplazamiento positivo para líquidos claros y viscosos. Sus características principales son:  
 -Autoaspirante volumétrica.  
 -Bombeo constante, uniforme, sin pulsaciones.  
 -Caudal proporcional a la velocidad.  
 -Reversible, invirtiendo el sentido de giro.  
 -Desmontaje fácil, por dos tirantes articulados.  
 -Filtrado ideal de líquidos delicados.

La bomba ROTOR-M es del tipo monobloc sanitaria de rotor helicoidal y estator de caucho sintético

-Estator normal: Perbunán alimenticio, blanco.  
 -Estator especial: Hypalón, EPDM, vitón.  
 -Cuerpo y Boca sanitarios, pulido mate.  
 -Barra universal de fácil mantenimiento.  
 -Eje intercambiable, independiente del motor.  
 -Cierre mecánico simple interior Burgmann. Posible otros cierres.  
 -Brida en fundición H° F°.  
 -Protector seguridad brida CE inoxidable.

Puede ir acoplada directamente a:  
 -Motor eléctrico 750-1000-1500 rpm.  
 -Motor-reductor 100 a 600 rpm.  
 -Motor-variador mecánico 190/1000rpm o 125/600rpm.  
 -Variador electrónico o convertidor frecuencia.

Equipada con roscas DIN-11851 (posible SMS, FIL, CLAMP).

### APLICACIONES

Nata, crema, jarabes, mermeladas, melazas, cosméticos, pastas, etc.  
 Agua, vino, aceites, zumos, etc.

### TECHNICAL SPECIFICATIONS

Flow rate..... Q = 0.5 to 20 m<sup>3</sup>/h  
 Total head..... H = 5 to 60 mwc  
 Motors..... P = 0.5 to 7.5 hp  
 (0.37 to 5.5 kW)  
 Motor velocity..... n = 100 to 1500 rpm  
 Maximum viscosity..... V = 100000 cP  
 Temperature..... T = 80°C  
 (special 110°C)  
 Material..... AISI-316L

### DESCRIPTION

The ROTOR-M is a monobloc positive displacement pump for thin and viscous liquids. Its main specifications are:  
 -Positive displacement self-suction.  
 -Constant uniform pumping, without any pulsation.  
 -Flow rate is proportional to speed of rotation.  
 -Reversible by changing the direction of rotation.  
 -Easy to disassemble by means of two swivelling tierods.  
 -Ideal filtering of delicate liquids.

The ROTOR-M is a monobloc, sanitary,

spiral impeller pump with a synthetic rubber stator.  
 -Normal stator: Foodstuff perbunan, white.  
 -Special stator: Hypalon, EPDM, viton.  
 -Sanitary body and mouth, mat finish.  
 -Easy-to-maintain universal rod.  
 -Replaceable shaft, independent of the motor.  
 -Single internal mechanical seal, Burgmann type. Other seals possible.  
 -Cast iron flange.  
 -Stainless steel CE flange safety protector.

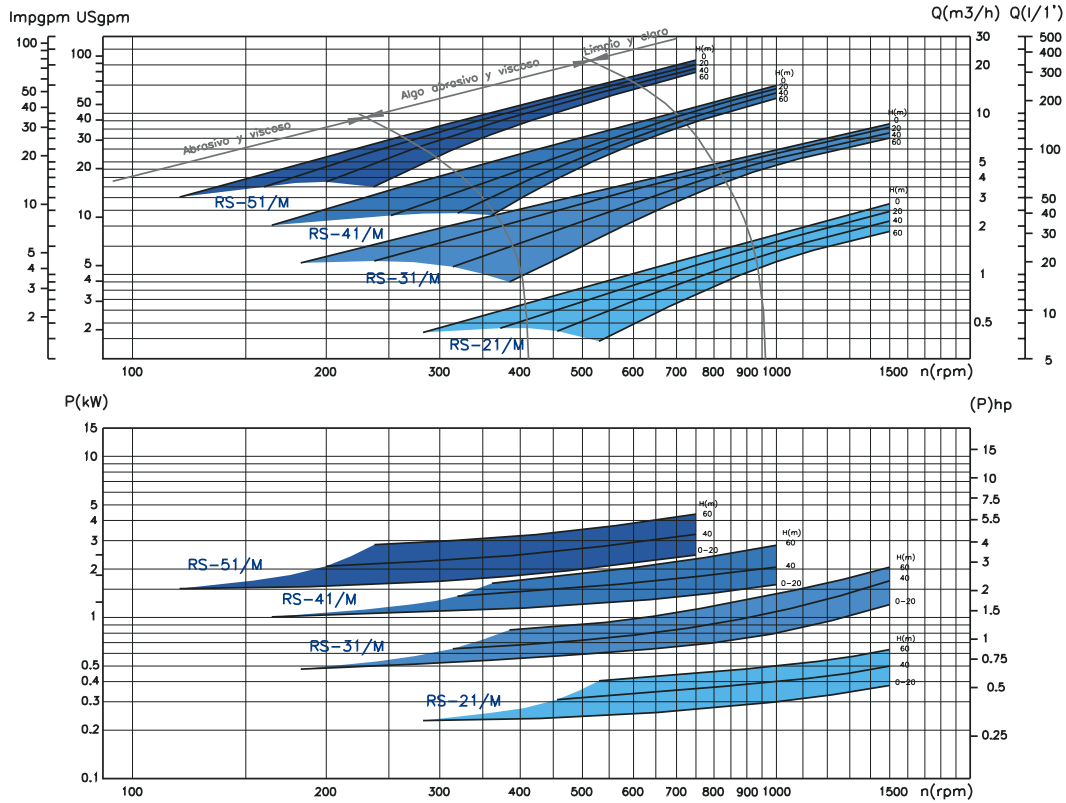
It may be directly coupled to:  
 -Electric motor, 750-1000-1500 rpm.  
 -Geared motor, 100 to 600 rpm.  
 -Mechanical variator-motor, 190/1000 rpm or 125/600 rpm.  
 -Electronic variator or frequency converter.

Fitted with DIN-11851 threads (possible SMS, FIL, CLAMP).

### APPLICATIONS

Cream, custard, syrups, jams, molasses, cosmetics and pastes etc.  
 Water, wine, oil and juices etc.

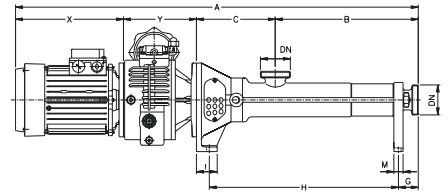
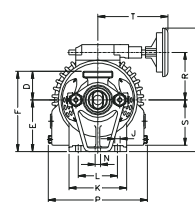
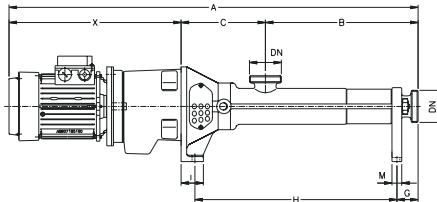
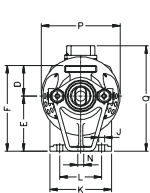
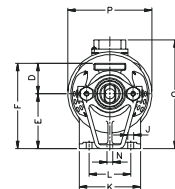
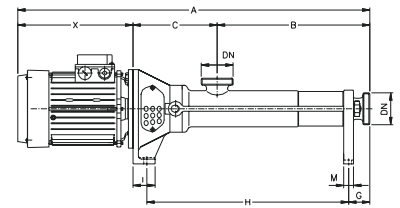
## ■ CURVAS CARACTERÍSTICAS / CHARACTERISTIC CURVES



NOTA: Estas curvas se entienden para líquido no viscoso de densidad 1 cST. / NOTE: The curves are understood to be for non-viscous liquids with a density of 1 cST.

## ■ DIMENSIONES / DIMENSIONS

TIPO / TYPE	DIMENSIONES / DIMENSIONS (mm)													MOTOR / MOTOR				PESO / WEIGHT (kg)					
	B	C	D	E	F	G	H	I	J	K	L	M	N	DN	TAM/SIZ	hp	kW		rpm	X	A	P	Q
RS-21/M	310	171	62	112	174	43	410	45	12	125	85	20	12	NW-40	80	0.75-1	0.55-0.75	1500	234	715	160	222	19-20
															90	1.5-2	1.1-1.5	270	751	174	235	23-26	
															80	0.5-0.75	0.37-0.55	1000	234	715	160	222	19.5-20.5
															90	1-1.5	0.75-1.1	270	751	174	235	23-26	
															90	0.5-0.75	0.37-0.55	750	270	751	174	235	23-26
RS-31/M	419	205	68	132	200	50	539	55	12	150	110	30	12	NW-50	90	1.5-2	1.1-1.5	1500	270	894	200	255	28-31
															100	3-4	2.2-3	299	923	200	269	36-39	
															90	1-1.5	0.75-1.1	750	270	894	200	255	28-31
															100	2	1.5	1000	299	923	200	269	38
															112	3	2.2	301	925	221	278	42	
RS-41/M	525	265	75	160	235	55	698	65	14	200	150	30	14	NW-65	90	0.5-0.75	0.37-0.55	750	270	894	200	255	28-31
															100	1-1.5	0.75-1.1	750	299	923	200	269	35-38
															112	2	1.5	301	925	221	278	43	
															112	3	2.2	301	1091	250	306	57	
															132	4-5.5	3-4	367	1157	261	325	69-76	
RS-51/M	625	302	85	180	265	70	810	80	15	240	180	40	16	NW-80	132	3-4	2.2-3	750	367	1294	300	343	101-108
															160	5.5-7.5	4-5.5	493	1420	310	389	130-143	



TIPO / TYPE	MOTOR-REDUCTOR / GEARED MOTOR				PESO / WEIGHT (kg)				
	hp	kW	rpm	rpm	X	A	P	Q	Weight
RS-21/M	0.5	0.37	100-125-150-200-250	250	350	831	160	214	25
	0.75	0.55	100-125-150-200-250-300-375-500	500	420	901	200	222	27
	1	0.75	125-150-200-250-300-375-500-625	625					28.5
RS-31/M	1.5	1.1	100-125-150-200-250-300-375	375	462	1086	200	255	43
	2	1.5	125-150-200-250-300-375-500-625	625					45
	3	2.2	200-250-300-375-500-625	625	515	1139	250	269	49.5
RS-41/M	2	1.5	100-125-150-200-250-300-375-500-625	625	480	1270	250	285	67.5
	3	2.2	125-150-200-250-300-375-500-625	625					71.5
	4	3	150-200-250-300-375-500-625	625	551	1341	250	297	75
RS-51/M	3	2.2	100-125-150-200-250-300-375	375	560	1487	300	330	105.5
	4	3	125-150-200-250-300-375-500-625	625					109
	5.5	4	200-250-300-375-500-625	625	563	1490			115
	7.5	5.5	250-300-375-500-625	625	698	1625	300	343	131

TIPO / TYPE	MOTOR-VARIADOR / VARIATOR-MOTOR										PESO / WEIGHT (kg)	
	hp	kW	rpm	X	Y	A	P	Q	R	S		T
RS-21/M	1	0.75	165-950	234	158	873	215	268	103	98	152	43
	1.5	1.1		270	189	940	253	298	123	122		60.5
	1.5	1.1										65.5
RS-31/M	2	1.5	165-950	270	189	1083	253	306	123	122	152	68
	3	2.2	175-1000	299	220	1143	305	346	149	145		96.5
	2	1.5	165-950	270	189	1249	253	336	123	122		83
RS-41/M	3	2.2	175-1000	299	220	1309	305	362	149	145	152	111.5
	4	3										118
	4	3	175-1000	299	220	1446	305	382	149	145	152	143
RS-51/M	5.5	4	175-1000	301	220	1446	305	382	149	145	152	150
	7.5	5.5	200-1000	367	244	1538	379	450	190	176	195	215



**Bominox, S.A.**  
Ctra. Banyoles, km.14  
17844 Cornellà de Terri (Girona) Spain  
Apart.123 Banyoles

Tel. 34 972 59 50 20  
Fax 34 972 59 51 20  
E-mail: info@bominox.com  
www.bominox.com